

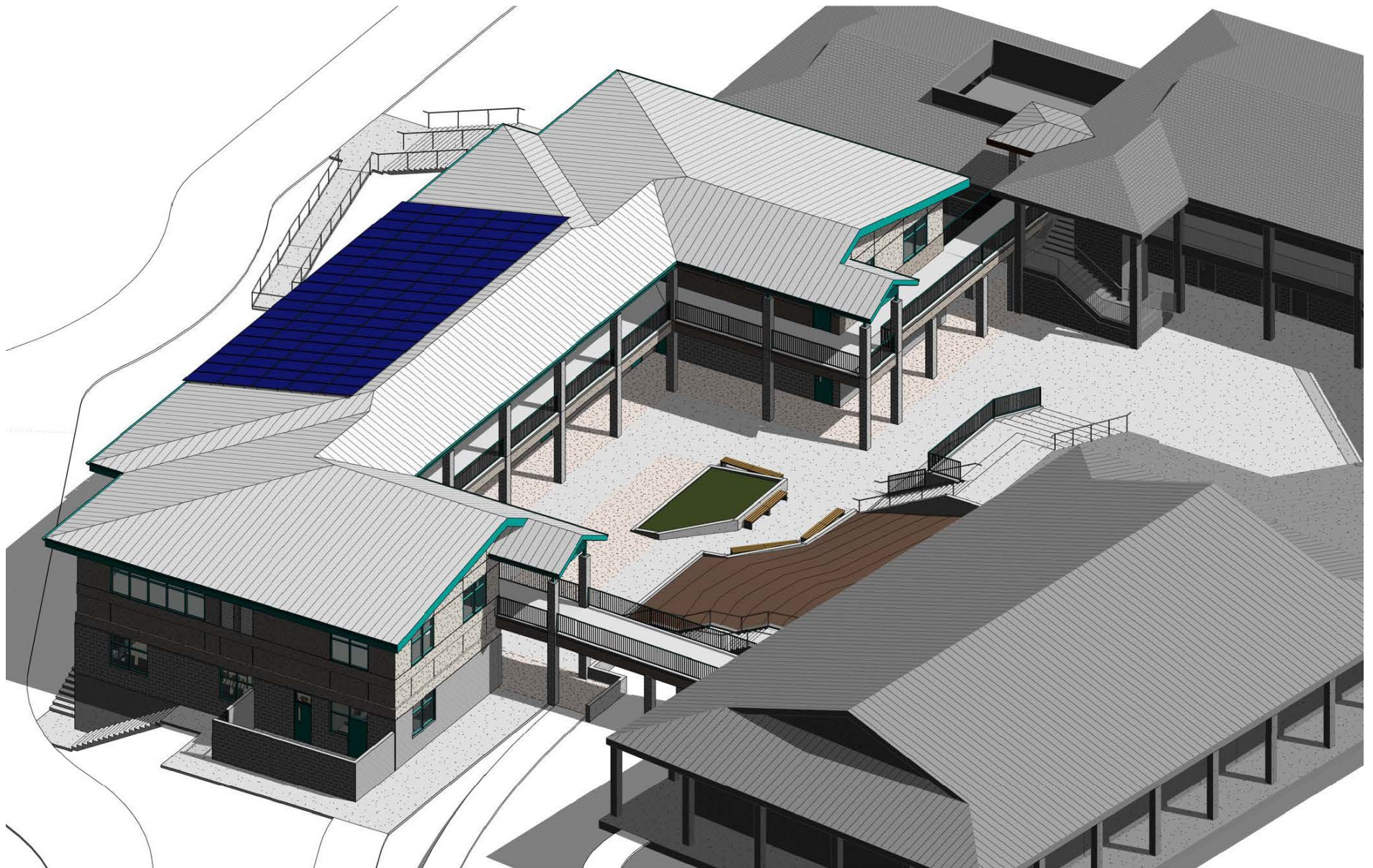
MARINA VILLAGE MIDDLE SCHOOL

The proposed changes to this campus are listed below and shown on the following pages:

TWO STORY CLASSROOM BUILDING

This project consists of:

- Replacement of relocatable classrooms with a two story classroom building
- Relocation of portable classrooms to serve as temporary classrooms while the two-story building is under construction
- Expansion of existing central courtyard and amphitheater
- Required accessible site work and upgrades, including new accessible parking and drop-off at school entrance, new accessible ramps, walkways, and repaving fire lane
- After completion of the two story classroom building, expansion of hard court play areas



ISOMETRIC VIEW FROM NORTHEAST
MARINA VILLAGE MIDDLE SCHOOL – TWO STORY CLASSROOM BUILDING



VIEW FROM LOWER THEATER – EXISTING
MARINA VILLAGE MIDDLE SCHOOL – TWO STORY CLASSROOM BUILDING



VIEW FROM LOWER THEATER – NEW
MARINA VILLAGE MIDDLE SCHOOL – TWO STORY CLASSROOM BUILDING



VIEW FROM STREET – EXISTING
MARINA VILLAGE MIDDLE SCHOOL – TWO STORY CLASSROOM BUILDING



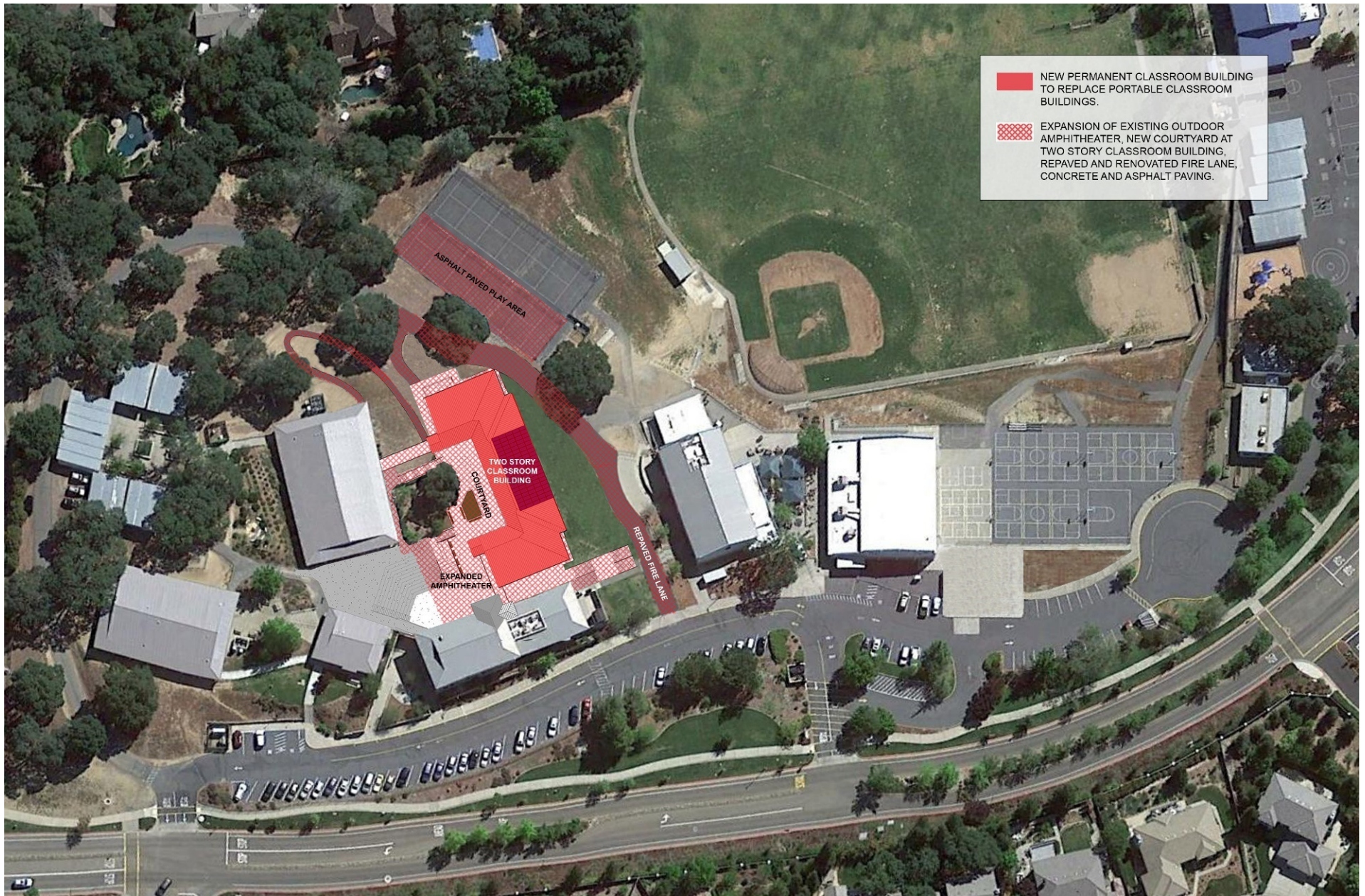
VIEW FROM STREET – NEW
MARINA VILLAGE MIDDLE SCHOOL – TWO STORY CLASSROOM BUILDING



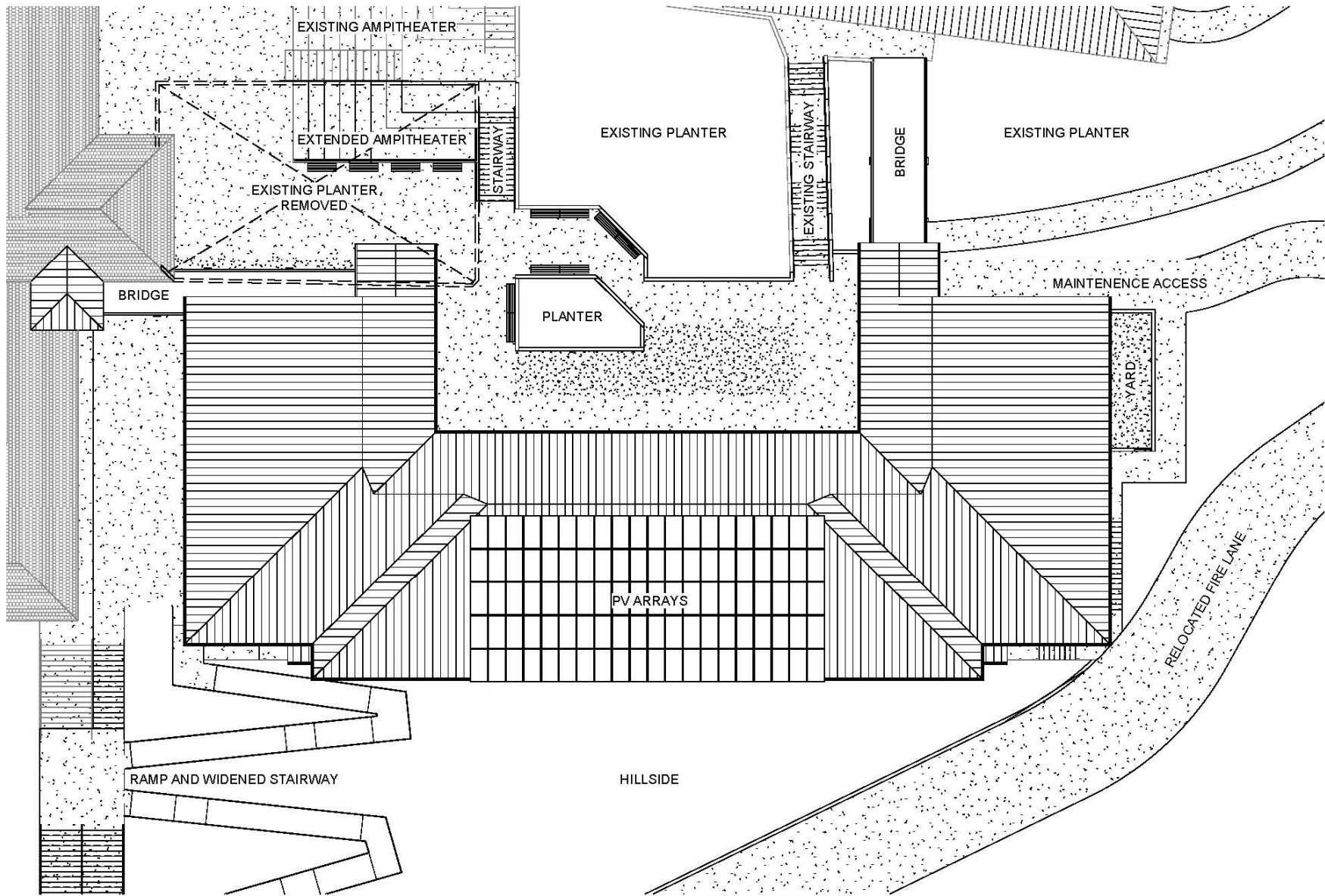
EXISTING SITE PLAN
MARINA VILLAGE MIDDLE SCHOOL



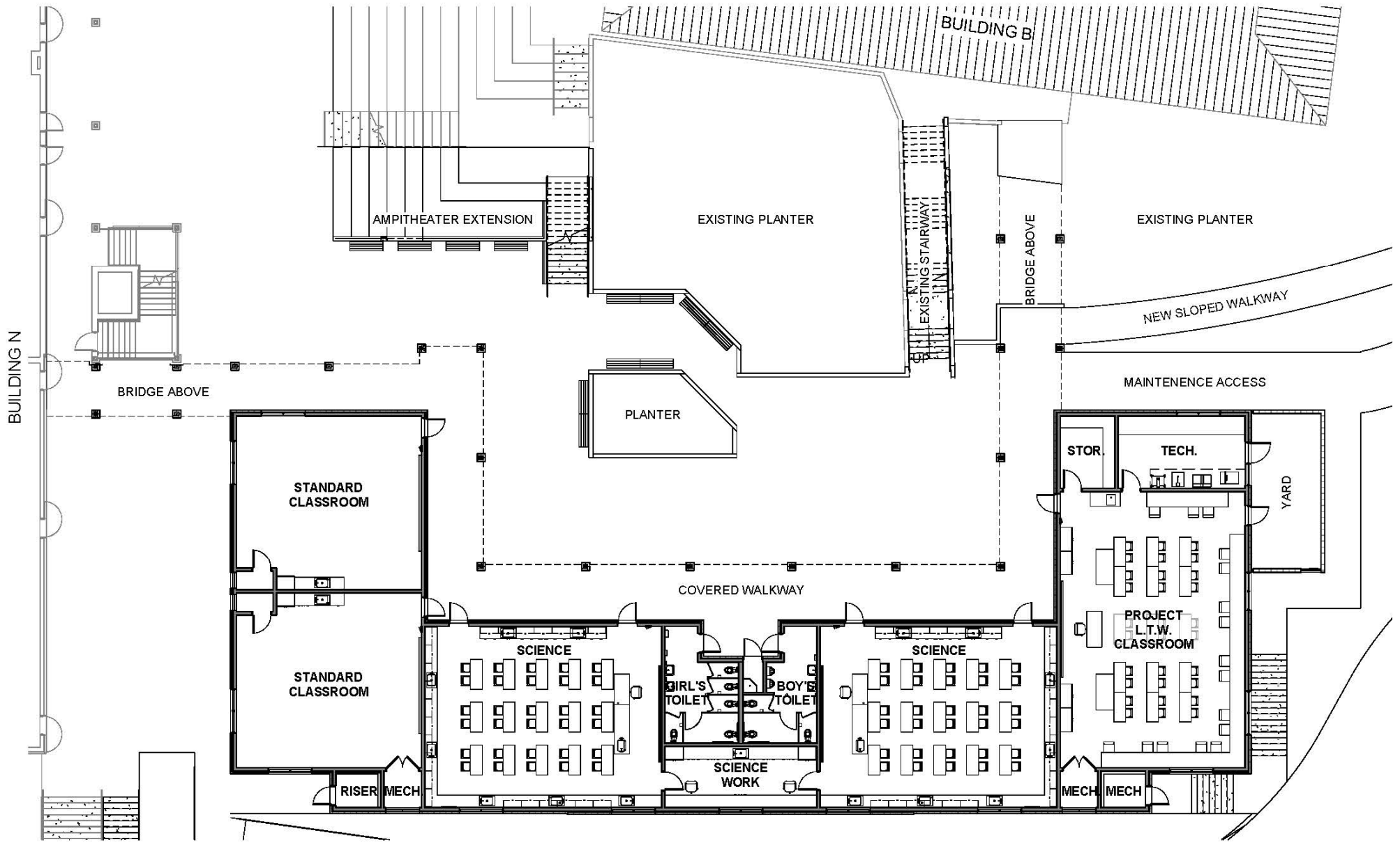
SCOPE OF WORK – PHASE 1 (DURING CONSTRUCTION) – TWO STORY CLASSROOM BUILDING
MARINA VILLAGE MIDDLE SCHOOL



SCOPE OF WORK – PHASE 1 (AT PROJECT COMPLETION) – TWO STORY CLASSROOM BUILDING
MARINA VILLAGE MIDDLE SCHOOL – TWO STORY CLASSROOM BUILDING

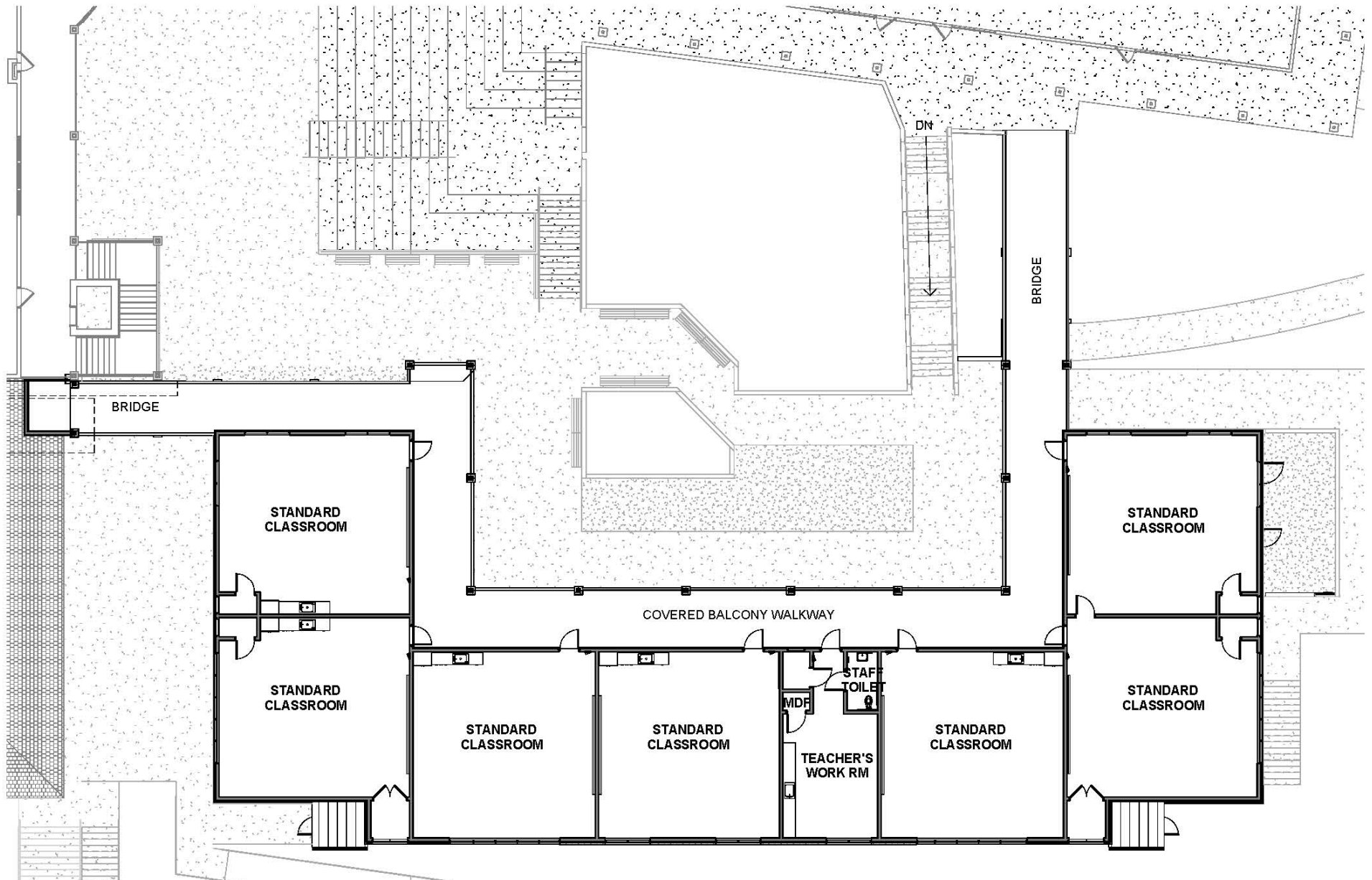


ENLARGED SITE PLAN
 MARINA VILLAGE MIDDLE SCHOOL – TWO STORY CLASSROOM BUILDING

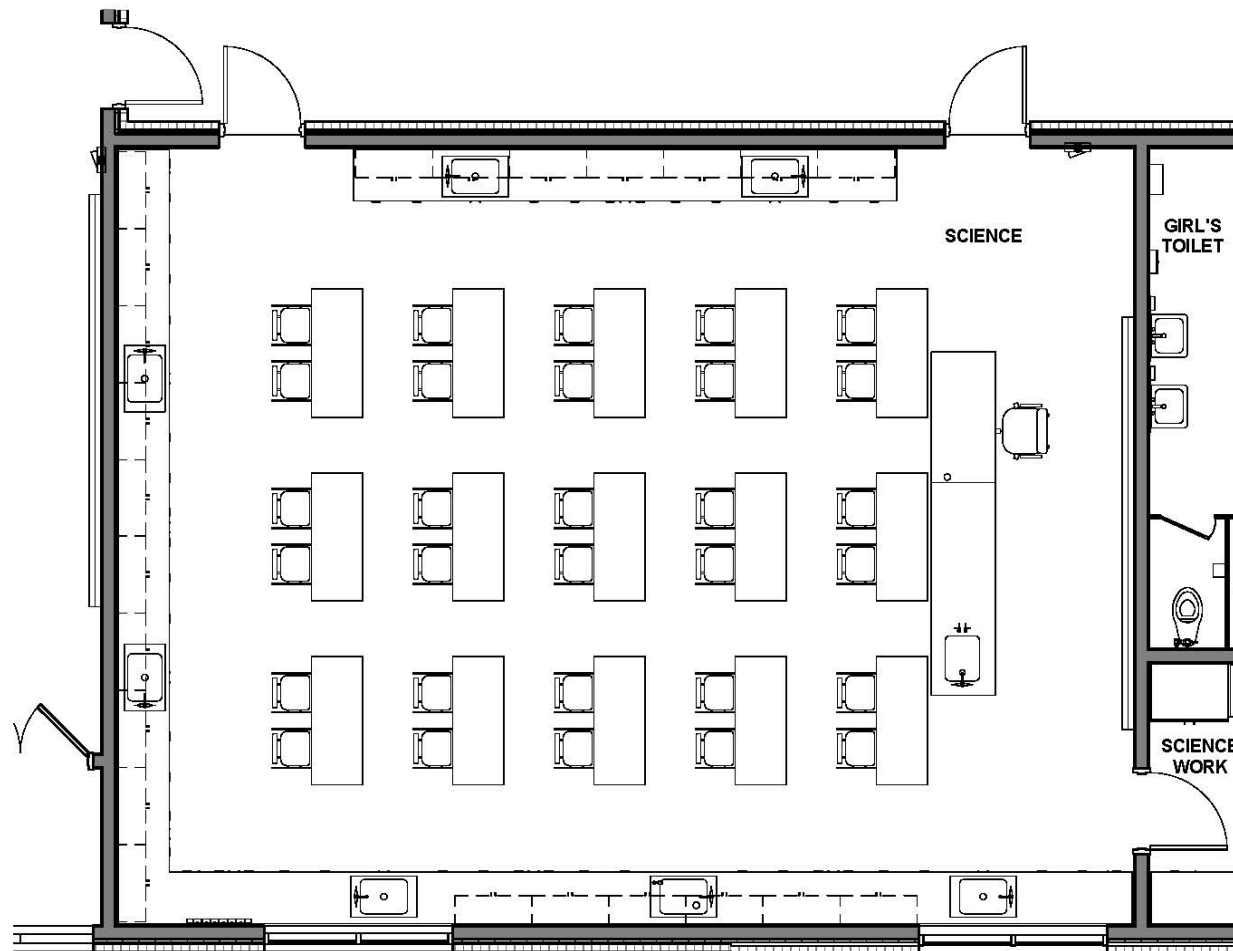


FIRST FLOOR PLAN

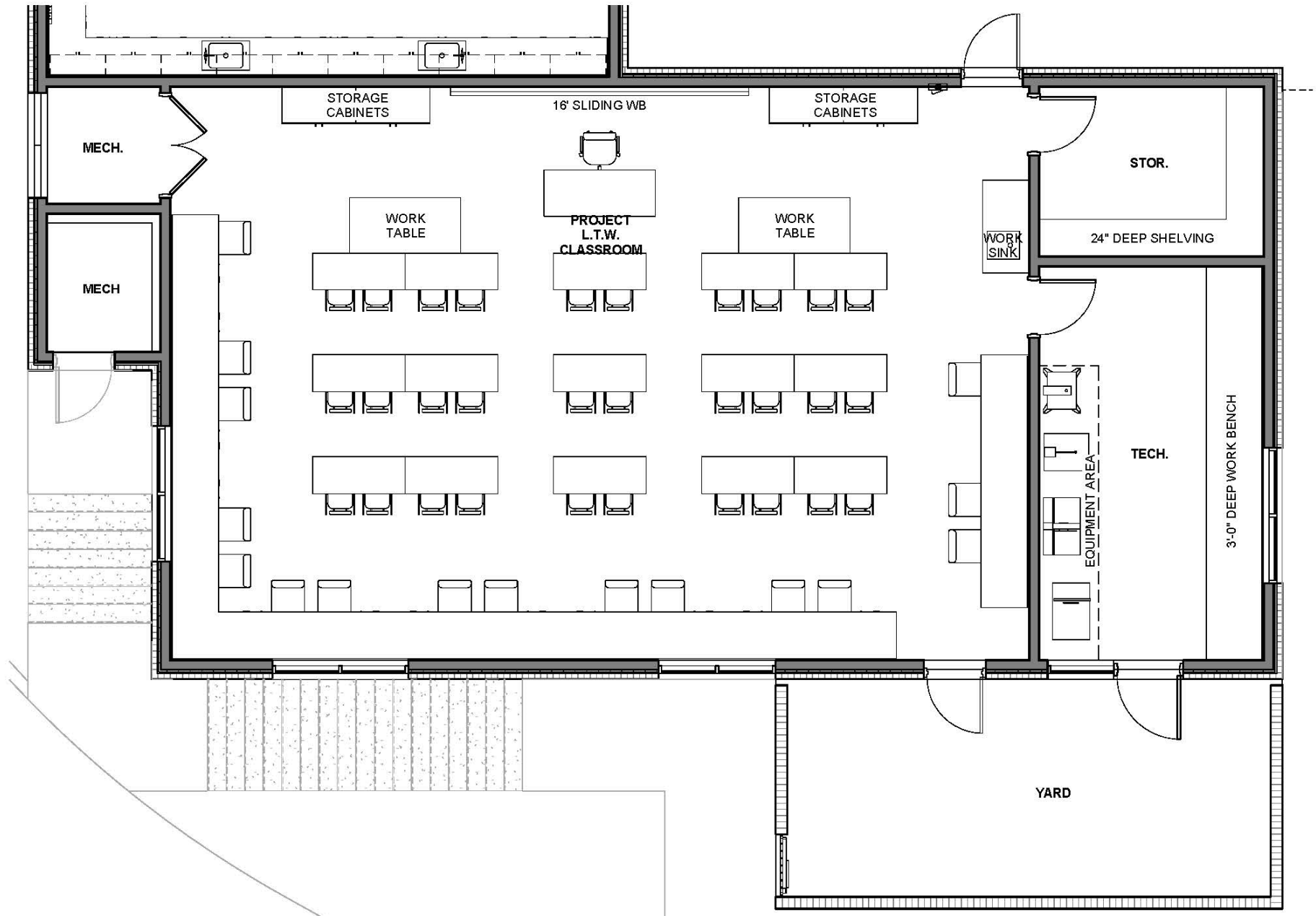
MARINA VILLAGE MIDDLE SCHOOL – TWO STORY CLASSROOM BUILDING



SECOND FLOOR PLAN
 MARINA VILLAGE MIDDLE SCHOOL – TWO STORY CLASSROOM BUILDING



SCIENCE CLASSROOM – ENLARGED PLAN
MARINA VILLAGE MIDDLE SCHOOL – TWO STORY CLASSROOM BUILDING



ENLARGED PROJECT LEAD THE WAY (PLTW) FLOOR PLAN
 MARINA VILLAGE MIDDLE SCHOOL – TWO STORY CLASSROOM BUILDING





2 LEFT ELEVATION
1/16" = 1'-0"

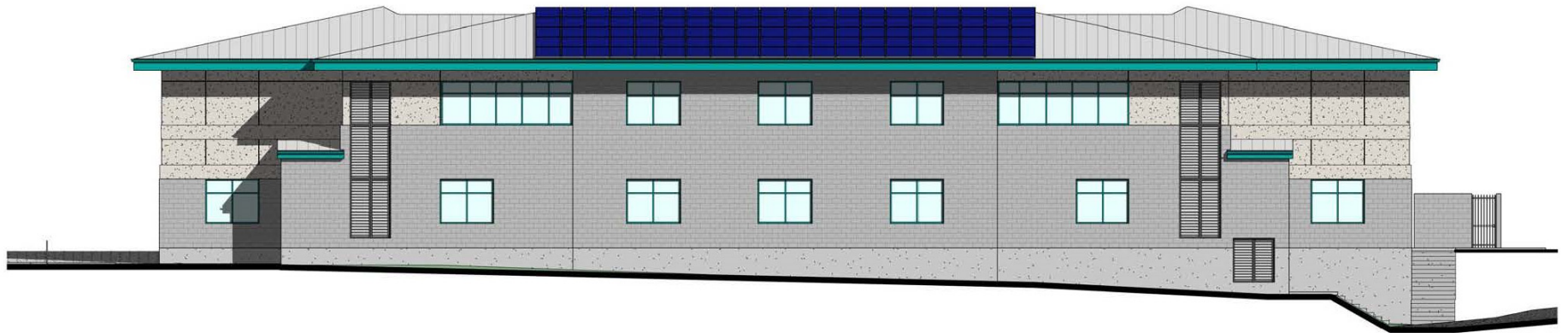


1 FRONT ELEVATION
1/16" = 1'-0"

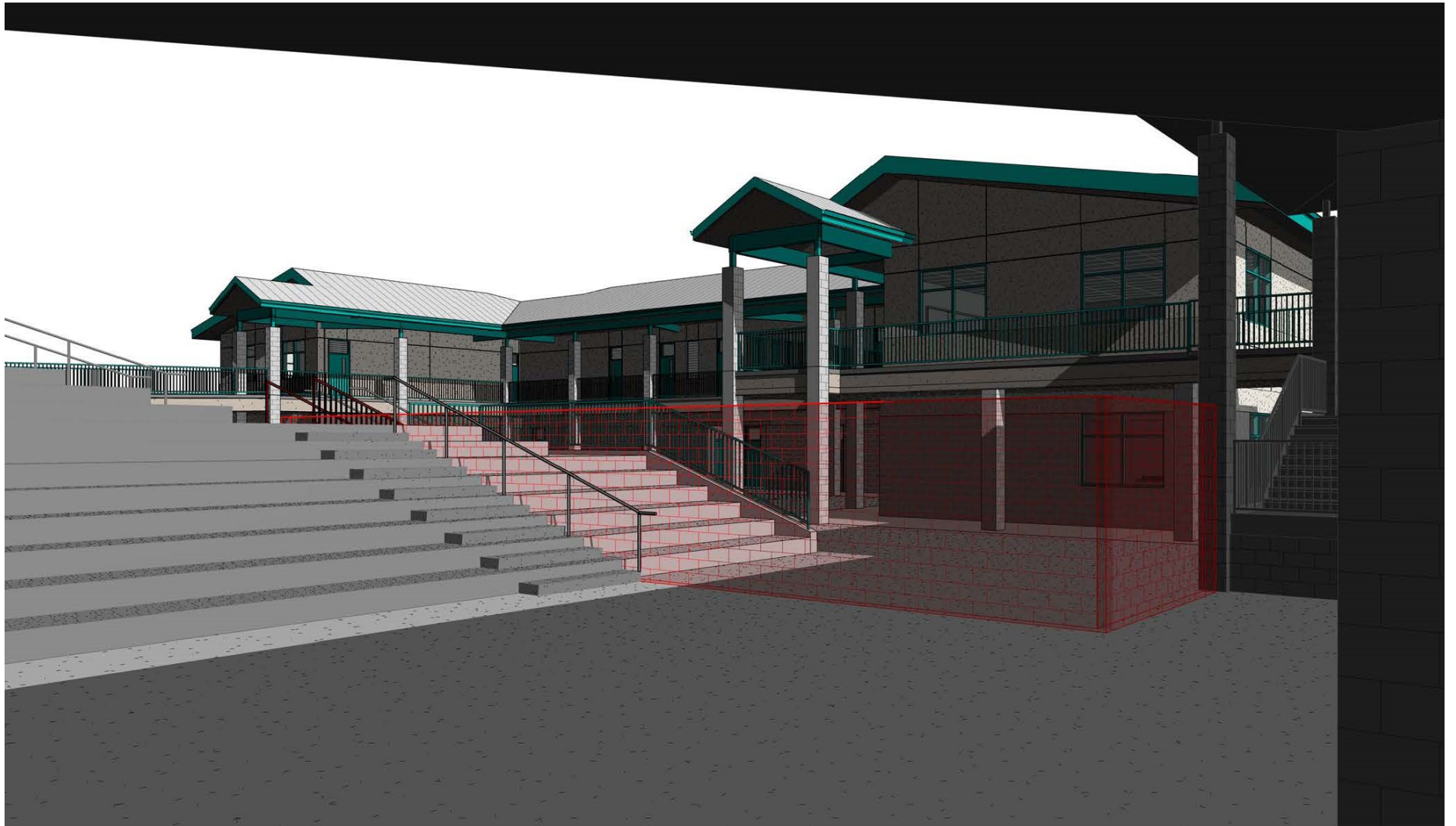
ELEVATIONS
MARINA VILLAGE MIDDLE SCHOOL – TWO STORY CLASSROOM BUILDING



4 RIGHT ELEVATION
1/16" = 1'-0"



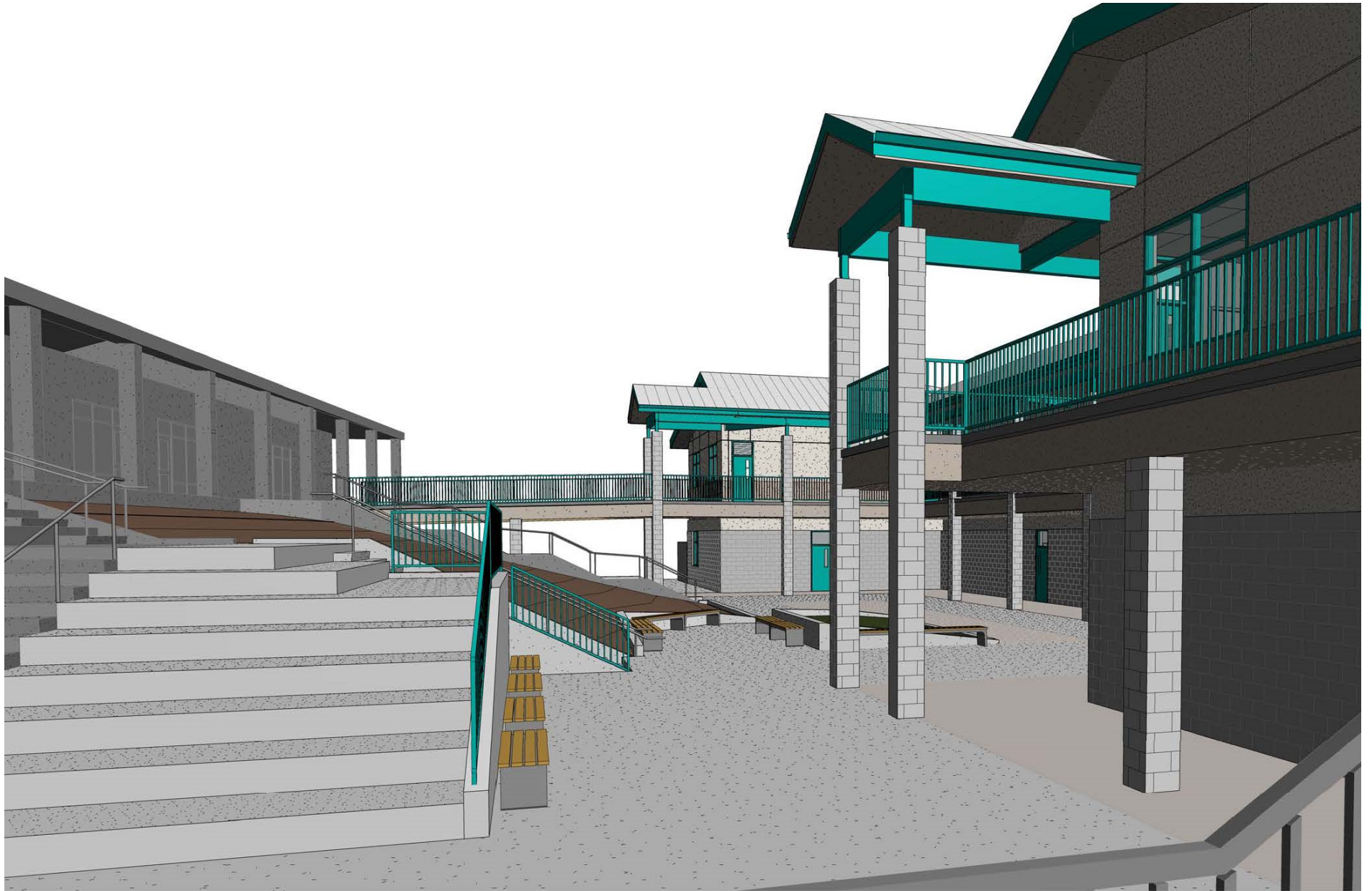
3 REAR ELEVATION
1/16" = 1'-0"



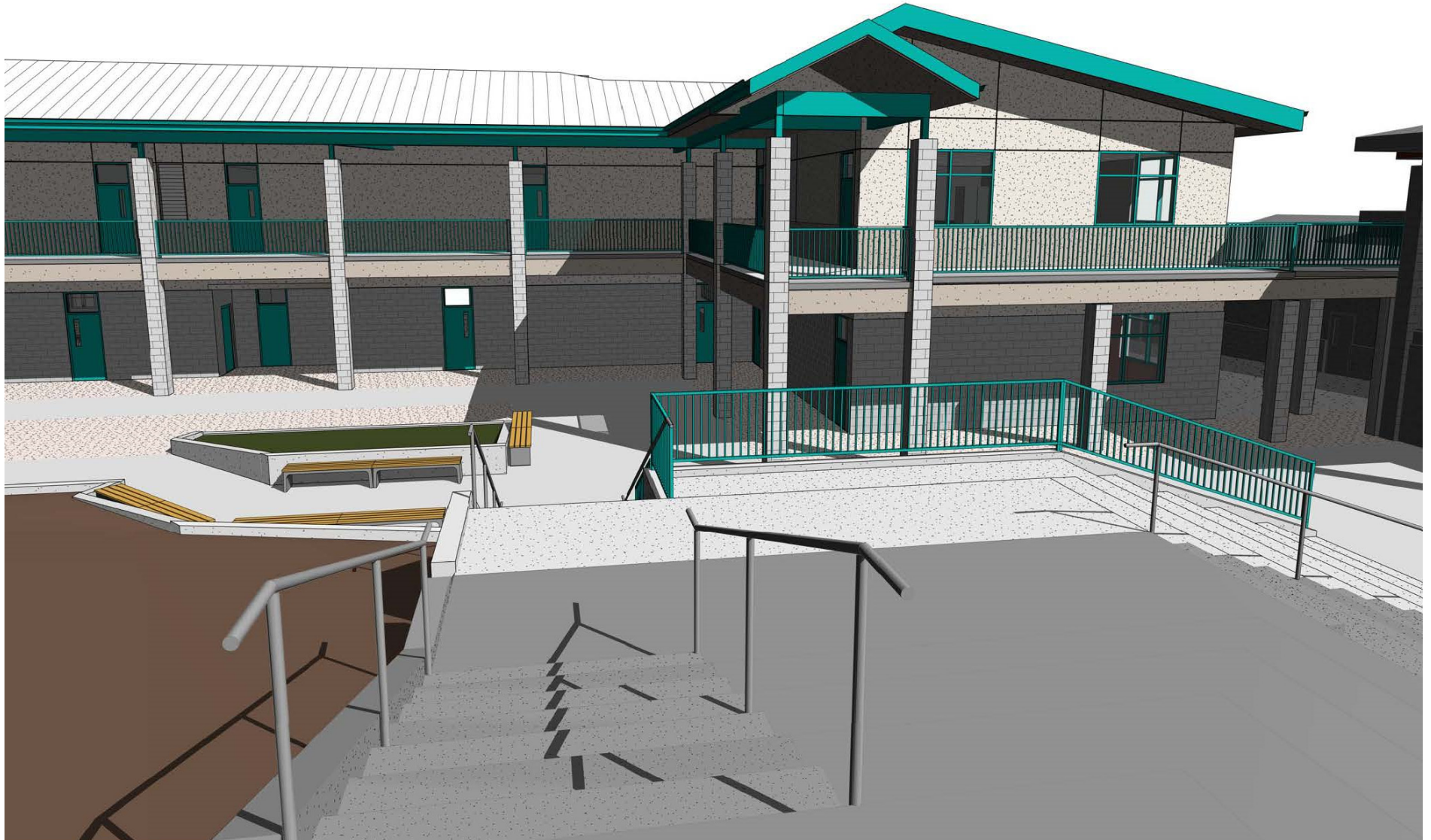
AMPHITHEATER / PLANTER WALL DEMOLITION
MARINA VILLAGE MIDDLE SCHOOL – TWO STORY CLASSROOM BUILDING



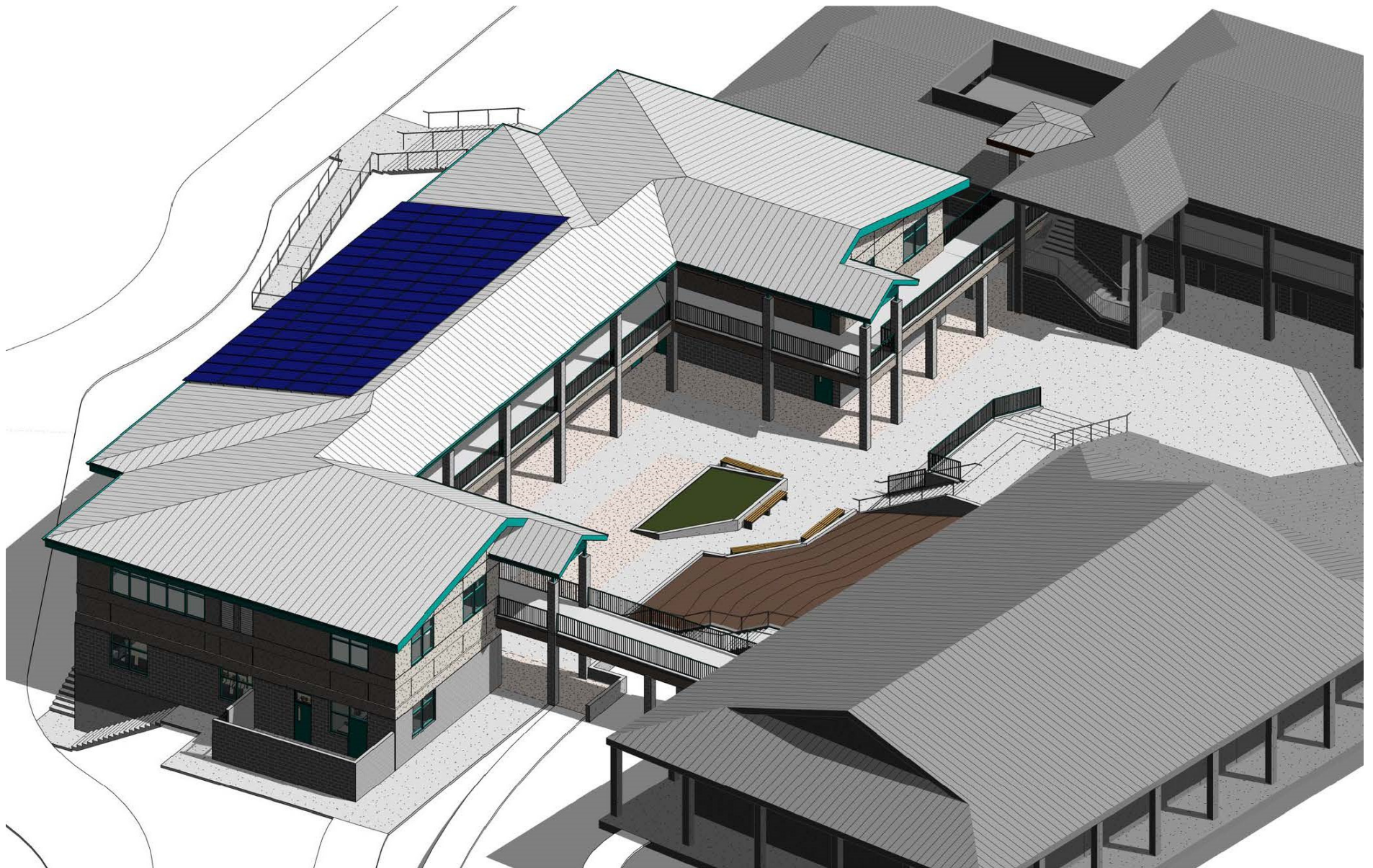
PERSPECTIVE AT AMPHITHEATER ENTRY TOWARD NEW TWO STORY CLASSROOM BUILDING
MARINA VILLAGE MIDDLE SCHOOL – TWO STORY CLASSROOM BUILDING



PERSPECTIVE FROM STAIR LANDING TO NEW COURTYARD
MARINA VILLAGE MIDDLE SCHOOL – TWO STORY CLASSROOM BUILDING



PERSPECTIVE FROM STAIR LANDING TO NEW COURTYARD
MARINA VILLAGE MIDDLE SCHOOL – TWO STORY CLASSROOM BUILDING



ISOMETRIC VIEW FROM NORTHEAST
MARINA VILLAGE MIDDLE SCHOOL – TWO STORY CLASSROOM BUILDING



VIEW FROM LOWER THEATER – NEW
MARINA VILLAGE MIDDLE SCHOOL – TWO STORY CLASSROOM BUILDING



VIEW FROM STREET – NEW
MARINA VILLAGE MIDDLE SCHOOL – TWO STORY CLASSROOM BUILDING